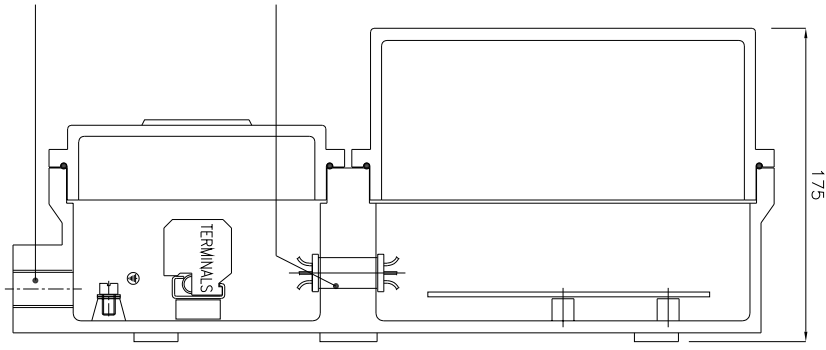


FRONT VIEW



SIDE VIEW

- Reference IS/IEC Standard as follows :
- 1 - FLAMEPROOF (Ex d) PROTECTION - IIA/IIb & IIC, IS/IEC 60079-1 (2014)
 - TEMPERATURE CLASS - T6
 - 2 - INGRESS (IP) PROTECTION - IP-66, IS/IEC 60529 (2001). (Reaffirmed 2014)

Standard Specification :

- 1 - MATERIAL - CAST ALUMINIUM ALLOY
- 2 - FINISH - INSIDE & OUTSIDE LIGHT GREY EPOXY POWDER COATING SHADE No. 631 AS PER IS-5
- 3 - EARTHING - 1 No. INSIDE & 2 Nos. OUTSIDE M6 SIZE S.S./BRASS SCREWS WITH 2 Nos. PLAIN WASHER
- 4 - HARDWARE - STAINLESS STEEL
- 5 - GASKET - 'O' RING NEOPRENE RUBBER GASKET
- 6 - MOUNTING ARRGT. - AS SHOWN IN DRG.

Material / Components Specification :

- 1 - S.S. NAME CUM WARNING PLATE (WITH DESCRIPTION TITLE, CIMFR, PESO, SR. NO., GAS GROUP, RATING, BIS MARKING, WARNING STATUS, etc...)
- 2 - SFU - 1 No. 16 Amp. SWITCH FUSE UNIT WITH FUSE LINK
- 3 - TERMINALS - 2.5sq. mm CLIP-ON TYPE TERMINALS OF 'EMEX/CONNECTWEL' MAKE
- 4 - CABLE ENTRIES - 2 Nos. M25 / 3/4" NPT / 1" ET EQUIVALENT
- CABLE ENTRIES FROM BOTTOM SIDE - REFER DRAWING
- 5 - CABLE GLAND - (Ex d) DOUBLE COMPRESSION TYPE CABLE GLAND OF 'SUDHIR' MAKE
- 6 - STOPPING PLUG - (Ex d) STOPPING PLUG OF 'SUDHIR' MAKE

THIS DRAWING IS PROPERTY OF "SUDHIR SWITCHGEARS PVT. LTD." AND MUST BE RETURNED ON REQUEST IF IT IS SUBMITTED AS CONFIDENTIAL INFORMATION IN CONNECTION WITH ENQUIRY, TENDER, ORDER, OR CONTRACTS IT IS NOT TO BE USED FOR ANY OTHER PURPOSE OR ORDER NOR MAY IT RE-COPIED OR LENT WITHOUT OUR AUTHORITY IN WRITING.

Page No. : 98

- Fitting OPTIONS :**
- 1) MATERIAL CONSTRUCTION : STAINLESS STEEL
 - 2) VOLTAGE : 230V / 415V AC
 - 3) CABLE GLAND & PLUG : BRASS/S.S./ALUMINIUM
 - 4) PAINT SHADE : 632/355/7031/7032, etc... (As per Standard)
 - 5) CANOPY : M.S. / G.I. / FRP
 - 6) SFU / ISOLATOR : UP/TO 32 Amp. DP/TP/PN

NOTE :		CAT. No.	RCP/2015
COMPONENT LAYOUT IS TENTATIVE RELOCATION OF PARTS & COMPONENTS IS POSSIBLE AT THE TIME OF ACTUAL MANUFACTURING.		MODEL No.:	DOIS/2015-10
OVERALL DIMENSIONS ARE ±10mm		DRN.	profill
Δ		CHKD.	JASNAH
Δ		APPD.	
Δ		SHEET	1 OF 1
REV.	DATE	DESCRIPTION	DRN.
			CHD.
			APPD.
			SCALE
			N. T. S. REV.- 0

SUDHIR SWITCHGEARS PVT. LTD.

130, MULBARI SAMACHAR MARG, MULBARI - 400 023

TITLE : **FLAMEPROOF - WEATHERPROOF ENCLOSURE FOR ROTARY ISOLATOR / SFU**

CHKD. CERT. No. : IN/CIMFR/TR21/R/H124

Dt. 08/07/2021

PESO No. : P546047/1

Dt. 30/10/2022

BIS LICENCE No. : CM/L-0002914461